



The Friends of
Queen Elizabeth's

IMPACT REPORT
2024

Giving back to *build our future*



THE FRIENDS OF QUEEN ELIZABETH'S
A CHARITY SUPPORTING QUEEN ELIZABETH'S SCHOOL

Contents

- 01 Introduction from the Headmaster
- 03 Introduction from FQE Director
- 04 Our figures at a glance
- 05 The School Shop
- 06 The Robert Dudley Studio
- 12 QE goes global
- 16 Close to our heart: the Fern Café
- 18 Next goal: a new sports hall
- 20 Benefactors and champions
- 22 Out and about
- 23 Heart and soul: celebrating FQE volunteers
- 24 Understanding FQE: how the charity is run
- 25 Corporate Trustee
- 26 The next steps
- 27 Would you like more details?

USEFUL LINKS:

**FQE Charity
Commission website**

**FQE Full, Audited
Accounts 2023/24**
for the year ended 31st July 2024

**Dedicated FQE
pages of our website**

SUPPORTING OUR SCHOOL HOME AND ABROAD

Welcome to our annual report on the impact made by The Friends of Queen Elizabeth's. The most notable development this year has been the start of our QE Global Schools project.

While it is certainly a bold initiative – QE will be the first UK state school to open affiliated schools abroad – it has been very carefully thought through here. Our partner, Global Education (GEDU), has extensive experience in the field. Our intention is that through revenue from this international venture, we will be able to support long-term educational excellence in our meritocratic environment back in Barnet.

At the same time, we will continue to rely in the years to come on the generosity of our current parents, and on the support of alumni, former parents and others: we are deeply appreciative of the high level of participation in giving from our Elizabethan family. The money raised through the *Giving to QE* scheme is the bedrock of the charity; it underpins the School's ability to regularly invest in enhancements to our provision. With people giving what they can, we are looking at ventures such as QE Global Schools to supplement donations and to deal with the significant rise in construction costs.

It has been a record year for FQE again this year in terms of income. That is something to celebrate and not to take for granted.

I remain immensely grateful to all who give.



Neil Enright, Headmaster



Queen Elizabeth's School

FOUNDED IN 1564

Valuation Ceremony

Class of 2024



Lord Simon Woolley, Principal of Homerton College, Cambridge, congratulates award-winner Nathan Woodcock at the Class of 2024 Valediction.

GOING FORWARD TOGETHER

The Friends of Queen Elizabeth's has for many years had a twofold mission. We raise funds to improve and expand educational facilities and opportunities at the School, while at the same time we nurture the Elizabethan community, including helping to integrate new parents and pupils.

Future developments to our campus will be guided by the Estates Masterplan. Work is under way on this long-term, phased strategy. The Robert Dudley Studio is now essentially complete, while preparations for the first major planning applications are progressing. Many of FQE's funds are directed to new buildings and facilities. However, the charity has also played a crucial role in the last two years in funding the site-wide infrastructure necessary to support the 1:1 programme that lies at the heart of the School's transformational digital strategy.

The community aspect of FQE goes from strength to strength. We have enjoyed another highly successful Founder's Day and Quiz Night, and very well-attended Coffee Mornings. All this brings parents and other supporters together, and we are so grateful to all who give their time and skills to support these events and more. FQE is at the heart of the Elizabethan community, and it is from this network that we draw much strength. **Please continue to support us.**

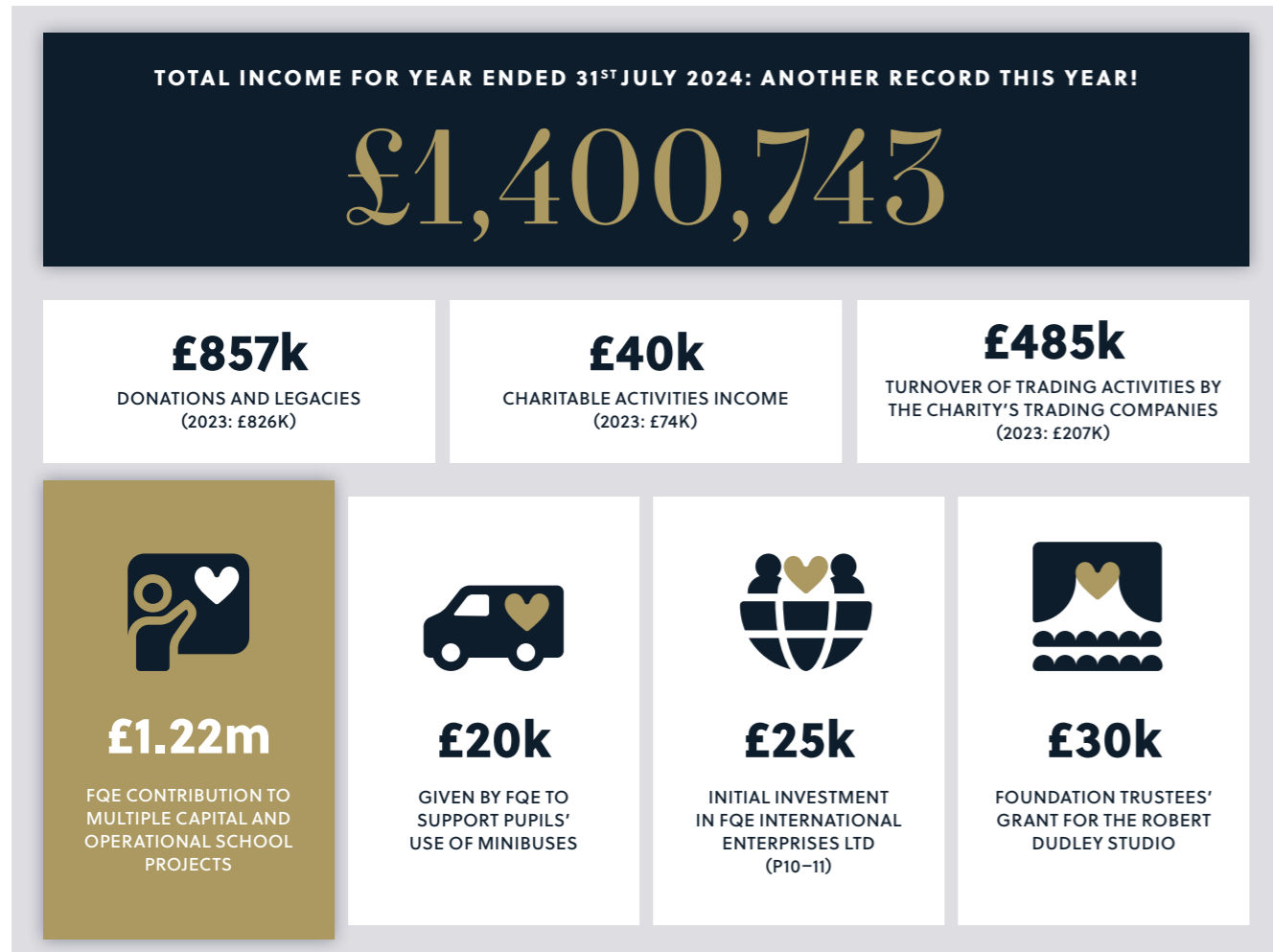
Barrie Martin

Barrie Martin, FQE Director



Our figures at a glance

The 2024 financial year (ended 31st July 2024) saw further increases in revenue, with fundraising for the 450th anniversary helping to generate a record level of income.



The School Shop

Our School Shop is run by FQE Enterprises Ltd, a wholly-owned subsidiary of the FQE charity. All its profits go to the charity. The shop team work hard to keep prices competitive: offering a high-quality service to families is paramount, rather than maximising profit.



The Robert Dudley Studio: *Creating QE's newest facility*

This year's largest FQE-funded project has been the creation of The Robert Dudley Studio. The 200-seat facility, with its own foyer and entrance, was constructed by combining classrooms and storerooms at the rear of the Main Building.

After starting in the February half-term break, work proceeded swiftly. Minor hiccoughs caused by the discovery of asbestos were safely overcome. Significant investment went into a new flat roof, with much improved insulation, and other external repairs. (We hope in time similarly to repair the rest of the Main Building's exterior.)

By summer half-term, work was largely complete. First to use the studio were Year 10, brought in for a successful trial assembly in July. Since then, the focus has been on the final touches, including the installation of sound and lighting.



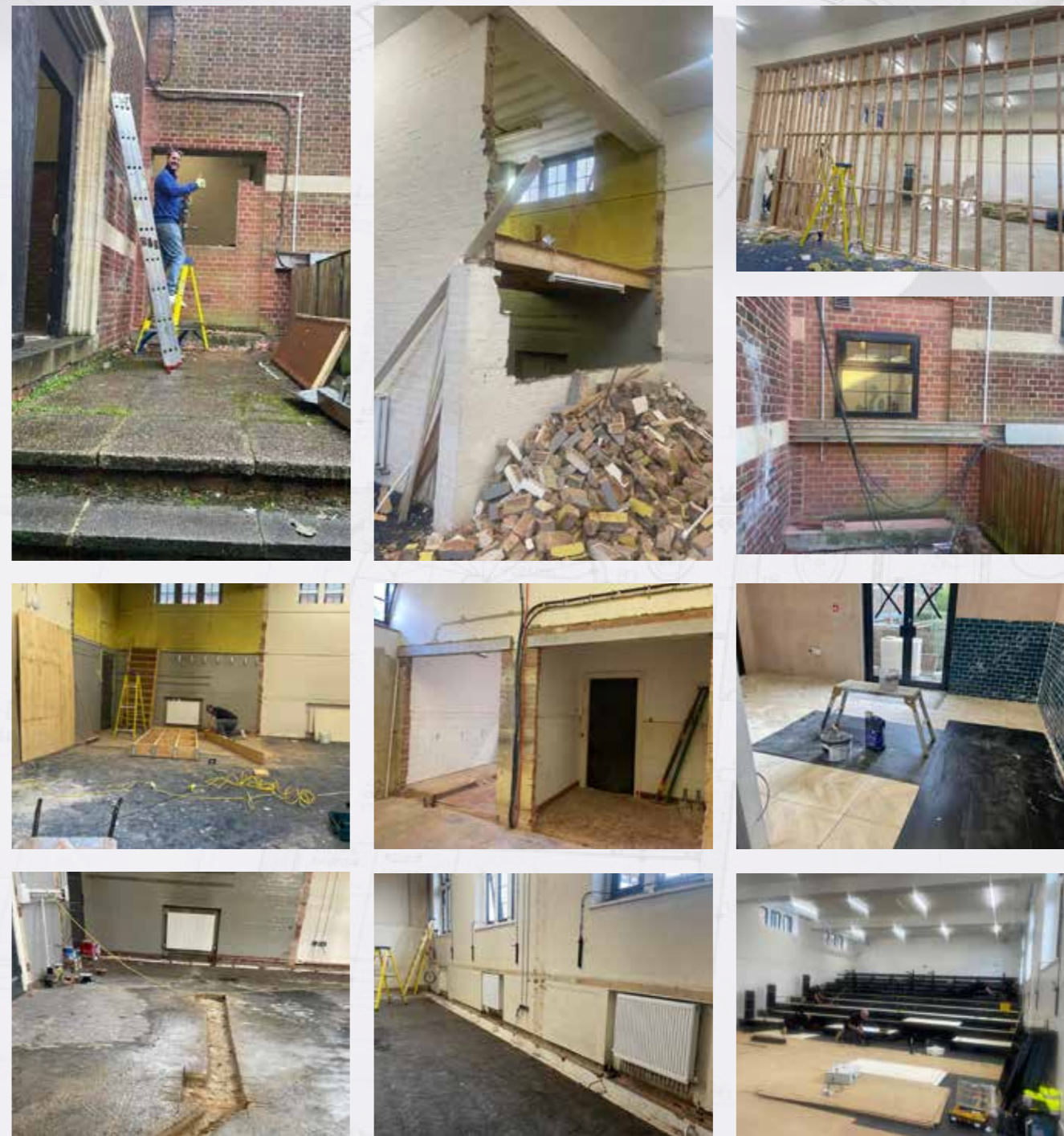

c£500K
OVERALL COST OF
THE ROBERT DUDLEY STUDIO,
FUNDED BY FQE



£30k
FROM FOUNDATION TRUSTEES
FOR PERIMETER CURTAINING
AND PROJECTION



£42k
SEAT SPONSORSHIP FROM
THE 450 CLUB, FORMED FOR
QE'S 450TH ANNIVERSARY



The Robert Dudley Studio: *Equipping pupils for the future*

In *As You Like It*, nobleman Jaques famously observes 'all the world's a stage'. It follows that the ability to present oneself well is important in life.

At QE, founded 26 years before Shakespeare likely penned that line, we are committed to helping pupils develop confidence and skills in oracy, recognising that these are required for high-level success in any modern career. It is this that lies behind the creation of The Robert Dudley Studio.

The facility will, of course, be a boon to the thriving Drama department and to our cultural life together. Some boys 'come alive' on stage; a few pursue acting as a career. But even those with no such aspirations will benefit. Jaques continues: '*One man in his time plays many parts*'. The studio will help QE pupils play theirs well.



Why Robert Dudley?

BEHIND THE NAMING OF OUR STUDIO

Robert Dudley (1532–1588), 1st Earl of Leicester, was both a great figure of the Elizabethan age and is a key part of QE's history. A longtime suitor for the hand of Queen Elizabeth I, he was an important patron of the arts, maintaining his own theatre troupe, Leicester's Men. In 1573, it was Dudley who asked Elizabeth for the Charter for 'the establishment of the Free Grammar School of Queen Elizabeth in Barnet'.



450 CLUB'S SPONSORED SEATS

Members of the club, formed for the 450th anniversary, were immortalised with individual plaques after giving at least £450 to FQE.



1573 — 2023



Looking good, sounding great

Two Old Elizabethans played important roles in the creation of The Robert Dudley Studio. Theatre designer Alex Wardle (1983–1990) provided free professional advice, while Chris Newton's company, School Stage, has masterminded sound & lighting. In keeping with the fact that Chris's main contractor works with The Royal Albert Hall, QE is aiming for the highest standards (albeit with a somewhat smaller budget!)

THE STUDIO FEATURES:

- Theatrical LED technology
- Energy-efficient power systems
- Any colour at the touch of a button
- Pre-programmable lighting scenes
- Speaker zone positioning (switching easily between live music, seated presentations and theatre-in-the-round)
- A back-stage Tannoy system, so actors can hear their cues

The Robert Dudley Studio: *Embracing creative partnerships*



CASE STUDY

Giselle comes to QE

A recent partnership project with the English National Ballet highlighted the huge potential for creative uses of The Robert Dudley Studio.

Thirty Year 9 boys saw a special screening of choreographer and dancer Akram Khan's award-winning production of the classical ballet, *Giselle*.

Then, after the boys had toured the ENB's design and rehearsal studios in Canning Town, ENB dancers and a musician came to QE and gave the boys a contemporary ballet workshop. That also took place in the studio. It was an important opportunity to test the new audio equipment.

Assistant Head (Pupil Involvement) Crispin Bonham-Carter said: "It was brilliant to see the studio being used flexibly as both a superb surround-sound cinema and then, with the seats retracted, a fantastic dance studio! Best of all was the enthusiasm and energy the boys put into their dancing: who knows? Maybe the next Akram Khan has just learnt his first dance steps?"

QE goes global

Three overseas schools to be opened

The most notable FQE development of the year has been the Global Schools project, with three new fee-paying independent schools to be opened overseas under the Queen Elizabeth's School banner. The initial plans are for two schools in India and one in the United Arab Emirates (probably Dubai). They are being established in partnership with education business Global Education (GEDU).

“This is a bold and exciting venture – and a first for a UK state school. The core, long-term aim is to support QE Barnet by generating revenue that can be invested into major projects. It will thus eventually significantly boost, but not replace, existing revenue from giving by parents, alumni and others.”

Neil Enright, Headmaster



LOCATION, LOCATION, LOCATION

In India, one school is planned in GIFT City (a new financial and technology hub in Gujarat province); the other in Gurugram (a satellite city near Delhi). Dubai is the likely location of the UAE school.



GIFT CITY, GUJARAT



GURUGRAM, NR DELHI



DUBAI, UAE

QE goes global

Steering the right course

Although the plans have been meticulously thought through, implementation of QE Global Schools is still in its early stages. Recruitment of the three founding headteachers is, however, well under way.

Queen Elizabeth's School has a crucial role in shaping and guiding the new schools that will carry its name. However, with its wide experience and considerable resources, GEDU is shouldering much of the administrative load involved in establishing new schools. This balance will ensure that Headmaster Neil Enright and his senior colleagues are free to focus without distraction on maintaining the very highest standards at QE Barnet.



BEHIND THE SCENES

FQE International Enterprises Ltd, a newly created subsidiary of FQE, has a key structural role. Established with £25K in share capital as a small investment to cover costs during the initial conversations, it is this company that will manage the commercial relationship and ensure that FQE and our School benefit from the income generated over time.

HERE AND THERE

GEDU's Chief Education Officer, Dr Vishwajeet Rana, visited QE in Barnet, with Deputy CEO Professor Ray Lloyd, meeting the Headmaster and other staff. A few weeks later, Mr Enright returned the compliment, flying to the UAE and India. He met dignitaries and education officials during a half-term visit that coincided with the Diwali celebrations in India.



GOOD TO GO: POSITIVE REACTIONS

Verbal feedback within the QE community has been overwhelmingly positive – and not only from this country. We have, for example, heard from four OEs based in Dubai who are enthusiastic about our plans: Omair Ahmed (2001–2008); Farshad Dabeshkhoy (1997–2005); Jai Doshi (2003–2010) and Murtaza Jivanjee (1997–2004). (Omair's brother has an important role in this project, too – [see p20.](#))



“ We would like to congratulate our strategic partners, Global Education Holdings (GEDU), on their partnership with Queen Elizabeth's School, a renowned U.K. grammar school established in 1573 with 451 years of academic excellence. Plans are underway to launch QE's Global Campus in both India and the UAE. This is a tremendous advancement, underscoring the strong commitment to India shared by GEDU, Queen Elizabeth's School, and the wider UK education community. A world class education organisation, GEDU offers a range of innovative risk-free solutions to holistically support UK education institutions that want to build their India engagement. ”

KEVIN MCCOLE
MANAGING DIRECTOR
UK India Business Council




Close to our heart: *the Fern Café*

Preparatory work is now being done ahead of the creation of our next important project, the Fern Café.

A major development, at an estimated cost of £2m, it will be in the very heart of the campus, in an area linking the Fern Building with Main Building currently used as a corridor and locker station. Significant enabling works will be required to both buildings, although planning constraints are a little less onerous than for some other projects.

The café is part of our long-term vision for the very large Fern Building, dating from 1974. The architect's drawings show how it could look – a modern, light design featuring multi-height ceilings. This project will only be possible with substantial support from parents, alumni and other friends.



The café will sit close to the centre of our campus, adding another useful dining and social space to our facilities.



Note: the drawings here are only preliminary visuals and are subject to change.

Café culture

The Fern Café will:

- EXPAND** QE's dining facilities, following its recent growth
- ADD** a servery (probably) and formal & informal dining areas
- HOST** smaller events, providing a useful extra venue
- CONNECT** directly to the Shearly Hall.

Next goal: a new sports hall

DRIVING AHEAD WITH OUR ESTATES STRATEGY

QE needs larger, better indoor sports facilities (and better changing Rooms); the School has made significant progress this year towards building a new sports hall.

Construction of this complex is a major objective within QE's new long-term estates strategy. It was outlined in the Masterplan Study (as explained in last year's FQE Impact Report) – a document commissioned to take a look at the whole campus, considering the School's requirements and any opportunities there might be. This way, QE can continue to make gradual enhancements that look to the future needs of the School, and do so in a 'joined-up' fashion.

The planning system is more complex and demanding than it used to be, so there is much work to do to prepare the necessary applications. This work is well under way: experienced specialists are helping the School get every aspect right, with one key objective being that the new facility has a positive impact on its surroundings.

The project is at a relatively early stage – and with limited funds available, it may need to be completed in three phases, following the initial demolition of the existing annexe. But the School is already studying the mix of facilities that will be required. High on the wishlist, for example, are indoor cricket nets that can be used year-round.



WIN-WIN!

Being active and getting involved in sport offers benefits both physical and mental. The new sports hall will support curricular, competitive and recreational sport, offering more opportunities for all boys, while also helping our elite young sportsmen.

Note: all visuals shown here are just exploratory ideas and are subject to change.

Benefactors and champions

FQE has for many years benefitted from the generosity of donors across the whole Elizabethan community, with current and former parents, alumni, staff, governors, and others all contributing their time, expertise and money in support of the School.

Giving expert support

Asif Ahmed (OE 1997–2004), who has become a director of FQE International Enterprises Ltd, adds great professional value to the board of the company through which QE will open its affiliate schools in Dubai and India. The author of best-seller *The Finance Playbook for Entrepreneurs*, Asif has deep experience of start-ups, leading the team at major accountancy firm Cooper Parry that focuses on venture capital-backed company founders. Asif's younger brother, Omair, the 2007 School Captain, lives in Dubai and has been vocal in his support for QE's plans in the Gulf state.

Asif was Guest of Honour at this year's Junior Awards.



One particularly efficient form of donating to FQE is through 'match funding', where a company matches money given by an employee to a good cause with an equal contribution.

Neil, a Year 7 QE parent, is successfully using match funding to support the School.

Like many other parents, having seen all the opportunities my son has at QE, I was motivated to contribute to FQE. My employer, Salesforce, has a long-standing commitment to philanthropy and operates a Matching Gifts scheme, using Benevity's charity donation software. I have been able to double not only my monthly contribution, but also the one-off amount I paid to join the 450 Club. It's really a win-win for FQE, at no additional cost – and very little extra effort – to me. I would encourage other parents to investigate if their companies operate a similar scheme."

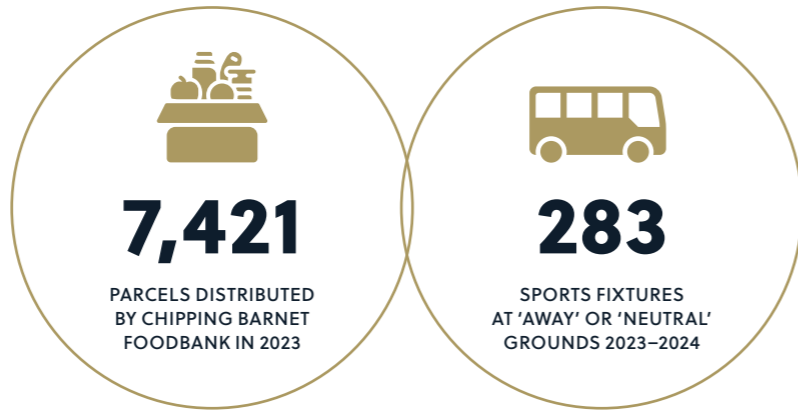
With costs rising, major projects such as The Friends' Recital Hall and Music Rooms, opened in 2022, rely on new and additional sources of funding.



Out and about

Our culture of philanthropy... and our longstanding support to QE's sportsmen

Participation in FQE's Founder's Day Fete and sponsored activities in aid of FQE, such as Year 7's Dollis Valley walk, instill in our boys the value of serving causes greater than themselves. 2023–2024 charity work included: a Barbershop performance in a Family Action concert; collections for Chipping Barnet Foodbank & Homeless Action in Barnet; and sixth-formers working for the Sebby's Corner charity on Queen's Road industrial estate – a new partnership.



ON YOUR SIDE!

FQE annually provides £20,000 to subsidise pupils' use of the School's minibuses. With QE sides regularly travelling *en masse* to away fixtures, we seek to defray the expenses involved for parents. Sport is, therefore, a major beneficiary of this support.



Heart and soul: Celebrating FQE volunteers

Volunteers and helpers are central to FQE's work to support the School – and more are always welcome! Volunteers run quizzes and serve in the hospitality team at School events, while paid helpers provide School Shop uniform fittings for incoming Year 7 boys. And every year, a small army of volunteers is needed for the Founder's Day Fete in June – FQE's single biggest annual fundraiser.



Please tell me more about being an FQE volunteer

REKHA'S ROLE: FETE SUPREMO

In 2024, it was Rekha Essex who shouldered responsibility for organising the Founder's Day Fete as head of FQE's Fete Sub-Committee. Continuing in the role, she is already hard at work on the 2025 celebrations. Part of both the sub-committee and FQE Executive Committee for several years, Rekha has led in important areas, such as securing programme advertising and sponsorships. She is a Director at Jeffersons Estate Agents – itself a long-time supporter of Founder's Day – and brings great organisational skills to FQE. Rekha is married to an Old Elizabethan, Simon Essex (OE 1979–1986); her son, Zeke, was at QE from 2014 to 2021.

“The FQE community is very special – your contribution, whether large or small, will go a long way to further enhance what this fantastic school has to offer.” Rekha Essex



SPOTLIGHT ON... FQE coffee mornings

On two Autumn and Spring Term Saturdays, FQE volunteers host coffee mornings at the School. These long-running, well-attended events open to all current parents also draw grandparents and others. They create a sense of belonging, help establish an informal social support network, and provide an opportunity to recruit FQE volunteers. They are particularly useful to new Year 7 families, giving them the chance to meet the Headmaster and each other.



Understanding FQE: *how the charity is run*

The Friends of Queen Elizabeth's School is a long-established charity, registered with the Charity Commission. Our governance structure is designed to ensure that we make the best professional strategic use of all donations to benefit current and future pupils of the School. In addition to the Directors, there are an executive committee and various sub-committees. These help FQE fulfil its role of liaising with parents and also ensure that parents can play a key part in organising fundraising activities for the School.




1966
THE YEAR FQE WAS
ESTABLISHED



289174
OUR CHARITY COMMISSION
NUMBER

CORPORATE TRUSTEE

Sets the policies of the charity with respect both to raising funds and to managing those funds in accordance with the charity's objects

The Friends of Queen Elizabeth's School Corporate Trustee Limited.

DIRECTORS OF THE CORPORATE TRUSTEE

Trustee representatives:

- Emi Aghdiran
- Tony Binstock
- Del Cooke
- Neil Enright
- Nick Gaskell
- Eric Houston
- Barrie Martin
- Colin Price

The next steps

We trust that you have enjoyed reading this report and learning about just how big an impact giving through The Friends of Queen Elizabeth's has had – and continues to have – in transforming the School and enhancing opportunities for successive generations of boys.

Do you think you can do more to support FQE?

Whether you're a parent, an alumnus or another member of the Elizabethan family, we would welcome a conversation with you. It's important to note that support can take many forms, including financial donations and the giving of your time and expertise. There is considerable flexibility: while one-off donations are always welcome, many find that giving monthly or annually works better for them.

Yes, I would like to get in touch about increasing my support

I would like to remember the School in my will

Do you wish to make a donation right now?

You can make a donation to FQE towards the delivery of new facilities and opportunities for our pupils through the secure CAF Bank portal. CAF specialise in working with charities.

We are hugely grateful for each and every donation received.

If you have an enquiry about matched giving, or any other question about donating, please don't hesitate to contact the School's Development Office.

Yes, I would like to make a single or regular gift

I would like to contact the Development Office

Would you like more details?

Please click the links below to access the FQE page on the Charity Commission website and to read FQE's full, audited accounts for the year ended 31st July 2024.

FQE Charity Commission website

FQE Full, Audited Accounts 2023/24

for the year ended 31st July 2024

Dedicated FQE pages of our website





The Friends of Queen Elizabeth's

Queen Elizabeth's School

Queen's Road, Barnet
Hertfordshire EN5 4DQ

 020 8441 4646

 developmentoffice@qebarnet.co.uk



qebarnet.co.uk/fqe

The Friends of Queen Elizabeth's is a registered charity, no. 289174



1573 — 2023